



LANZERAC

HOTEL & SPA

Est. 1692 Since

★★★★★



1692

Meetings, Events & Conferences

E-BROCHURE



www.lanzerac.co.za





Meetings, Events & Conferences

Lanzerac Hotel & Spa provides the ideal space for meetings, events and conferences. There are six new in-door boardrooms and conferencing options to choose from - Cellar Hall, The Loft, The Drawing Room, Buchanan's Chambers, Master's Study and The Conservatory and the Private Dining venue. The picturesque setting of the Manor Lawns also offers the perfect opportunity for exclusive events.

With high end facilities, beautiful country charm and versatile venues which cater to a wealth of occasions, the functions at Lanzerac are defined by prestige and sophistication. We signify superb luxury and exceptional service, making it the most sought-after function venue for hosting private dinners, high profile events, corporate conferences, management meetings and launches.



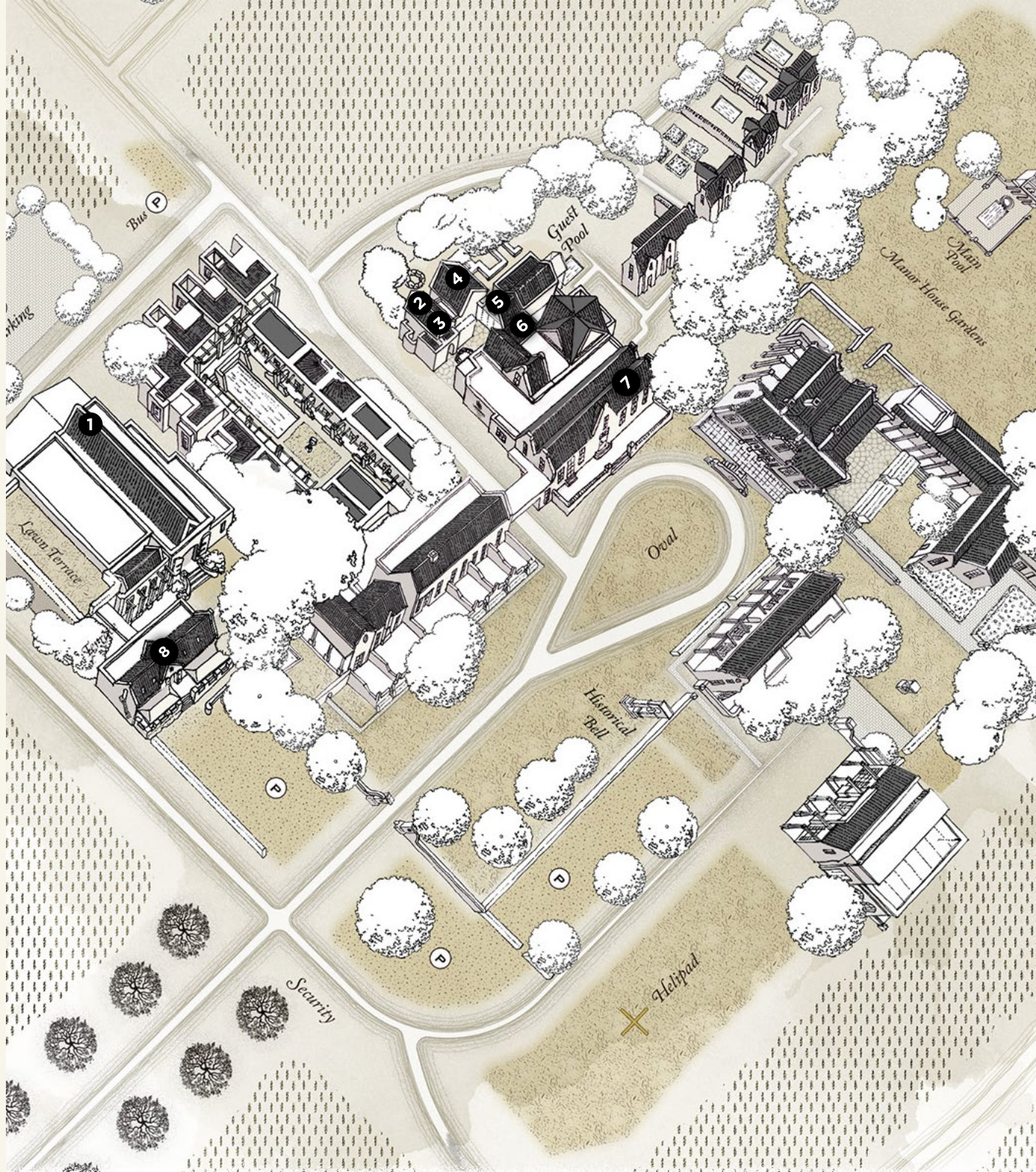
LANZERAC
WINE ESTATE

Est. 1692 Since

The Estate Map

MEETINGS, EVENTS & CONFERENCES

- 1 THE CELLAR HALL
- 2 THE LOFT (UPPER LEVEL)
- 3 THE DRAWING ROOM (GROUND LEVEL)
- 4 BUCHANAN'S CHAMBERS
- 5 MASTERS STUDY
- 6 THE CONSERVATORY
- 7 PRIVATE DINING
- 8 TASTING ROOM



Cellar Hall

Conferencing

1 May 2020- 30 April 2021

Full Day Conference Package – R745

Half Day Conference Package – R695

Functions

VENUE HIRE

R35 000 (Monday to Thursday)

R49 000 (Friday to Sunday)

INCLUDES:

- Cocktail tables with high back leather chairs
- Round tables and banquet chairs
- Standard white linen (3mx3m) tablecloths and napkins
- Cutlery, crockery & glassware
- Physical cash bar set up, condiments, ice, glasses & barmen
- Black & White chequered dance floor 5mx6m
- Waiter service
- DJ Trestle table

EXCLUDES:

- Stationary
- All external supplier services i.e. DJ/Photographer/Décor & flowers



Capacity

FLOOR AREA	WIDTH	LENGTH
193.98	10.6	18.3

DOOR HEIGHT	CEILING HEIGHT
2.64	3.9
CONFIGURATION	PAX
Banquet	180
School Room	150
Cinema	200
U-Shape	30



Cellar Hall - Foyer

Private Dining

Setup Cost: R5000

INCLUDES:

- One long table (min 6 guests, max 12 guests)
- Banquet chairs
- Standard white napkins
- Cutlery, crockery & glassware
- Waiter Service

EXCLUDES:

- Menu and beverage costs
- Service fee
- All external supplier services i.e. DJ/Photographer/Décor & flowers

Functions

VENUE HIRE:

R15 000 (Friday to Sunday)

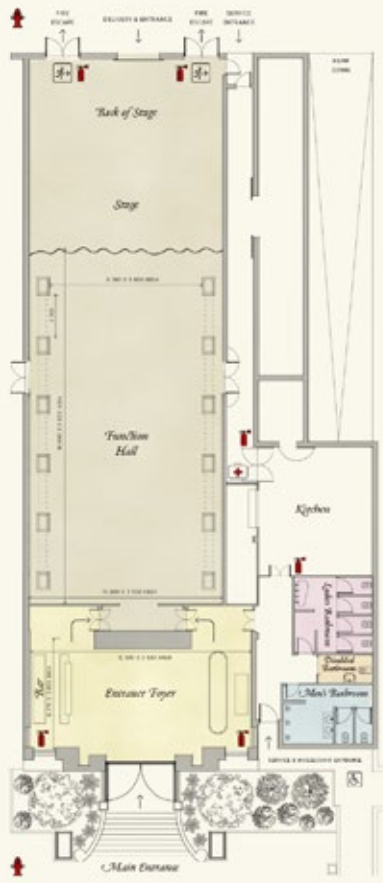
R11 000 (Monday to Thursday)

INCLUDES:

- Cocktail tables and leather high back chairs, or 3 round tables with standard white linen
- Cutlery, crockery & glassware
- Physical cash bar set up, condiments, ice, glasses & barmen
- Waiter Service

EXCLUDES:

- Menu and beverage costs
- Flowers and décor
- Service charge



Capacity

FLOOR AREA	WIDTH	LENGTH
193.98	10.6	18.3

DOOR HEIGHT	CEILING HEIGHT
2.64	3.9
CONFIGURATION	PAX
Cocktail	40



The Loft

Conferencing

1 May 2020- 30 April 2021

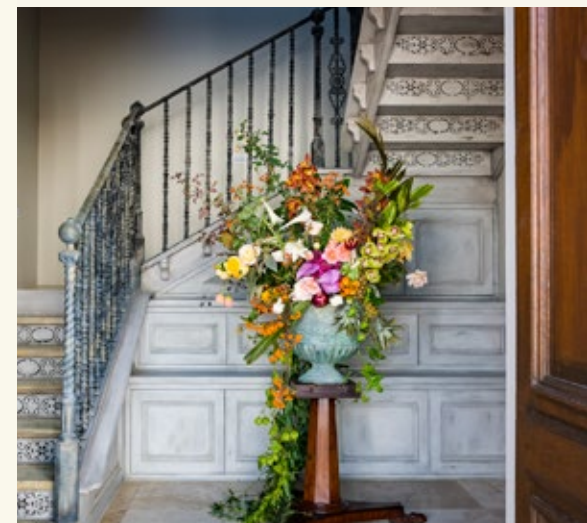
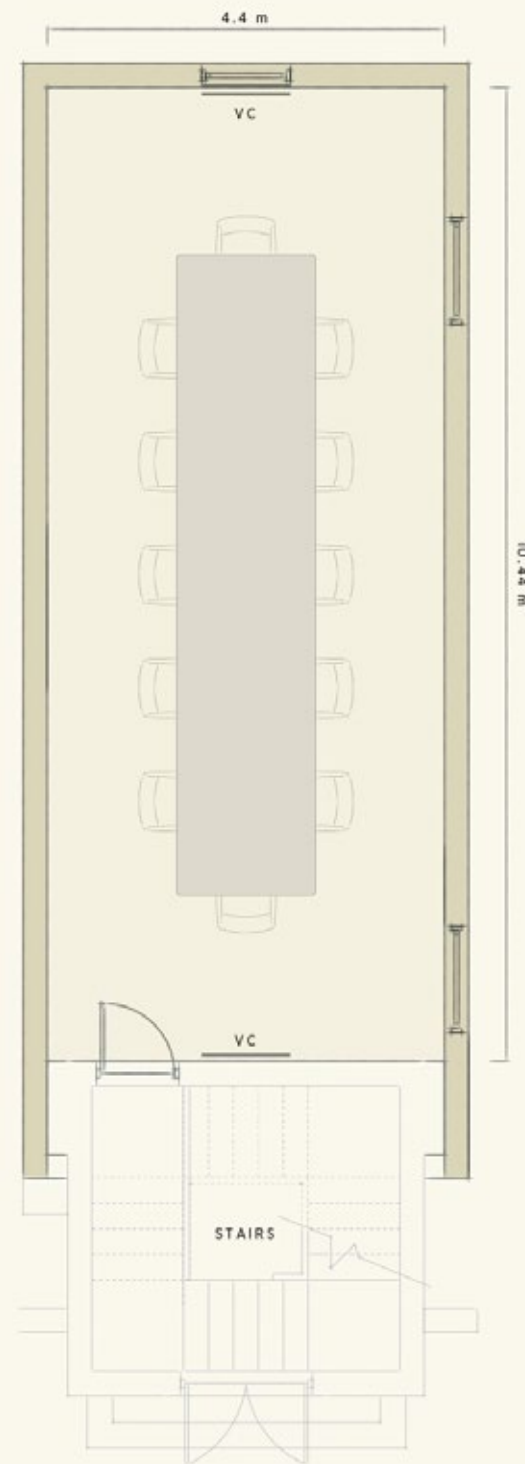
Full Day Conference – R745

Half Day Conference – R695

Capacity

FLOOR AREA	WIDTH	LENGTH
45.93m ²	4.4m	10.44m

DOOR HEIGHT	CEILING HEIGHT
1.85	2.44
CONFIGURATION	PAX
Boardroom	12



The Drawing Room

Conferencing

1 May 2020- 30 April 2021

Full Day Conference – R745

Half Day Conference – R695

Private Dining

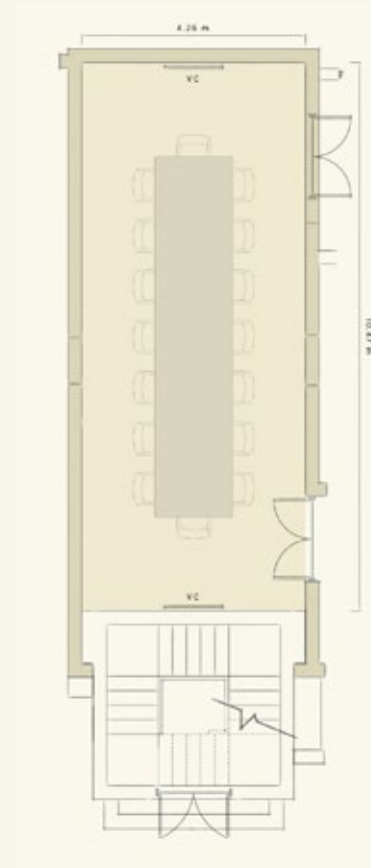
Setup cost: R5000

INCLUDES:

- One long 14-seater table (min 6 guests, max 14 guests)
- Leather chairs
- Standard white napkins
- Cutlery, crockery & glassware
- Printed menus
- Waiter Service

EXCLUDES:

- Menu and beverage costs
- Flowers and décor
- Service fee



Capacity

FLOOR AREA	WIDTH	LENGTH
45.60m ²	4.26m	10.47m

DOOR HEIGHT	CEILING HEIGHT
1.85	2.46
CONFIGURATION	PAX
Boardroom	20



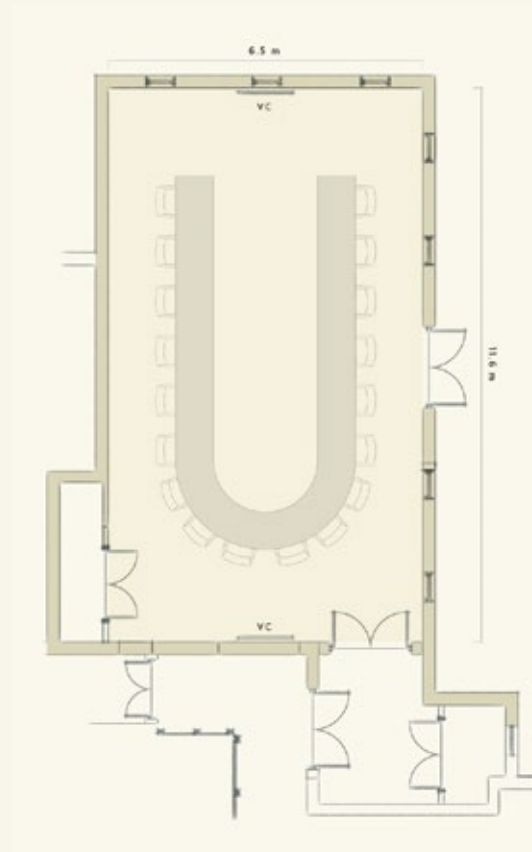
Buchanan's Chambers

Conferencing

1 May 2020- 30 April 2021

Full Day Conference - R745

Half Day Conference - R695



Capacity

FLOOR AREA	WIDTH	LENGTH
21.65m ²	3.67m	5.9m

DOOR HEIGHT	CEILING HEIGHT
2m	5.7m
CONFIGURATION	PAX
Boardroom	30



Masters Study

Conferencing

1 May 2020- 30 April 2021

Full Day Conference – R745

Half Day Conference – R695

Private Dining

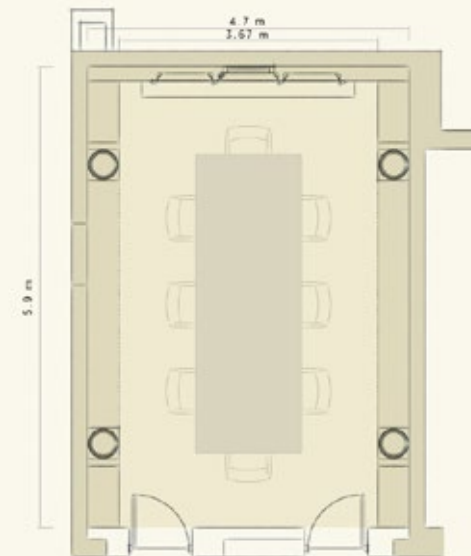
Setup cost: R5000

INCLUDES:

- One long 8-seater table (min 6 guests, max 8 guests)
- Leather chairs
- Standard white napkins
- Cutlery, crockery & glassware
- Printed menus
- Waiter Service

EXCLUDES:

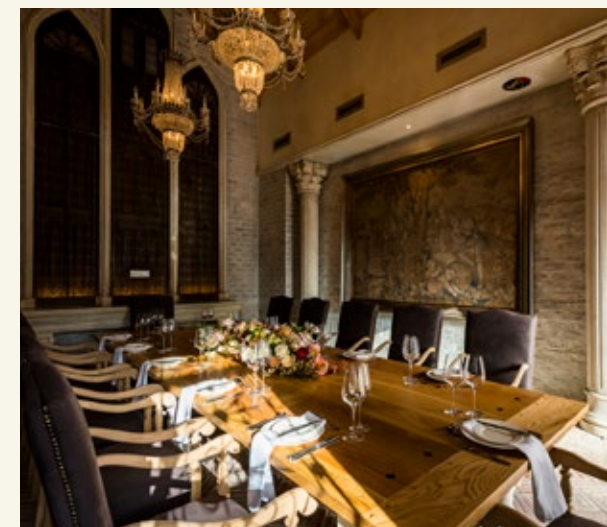
- Menu and beverage costs
- Flowers and décor
- Service fee



Capacity

FLOOR AREA	WIDTH	LENGTH
21.65m ²	3.67m	5.9m

DOOR HEIGHT	CEILING HEIGHT
2m	5.7m
CONFIGURATION	PAX
Boardroom	8



The Conservatory

Conferencing

1 May 2020- 30 April 2021

Full Day Conference – R745

Half Day Conference – R695

Private Dining

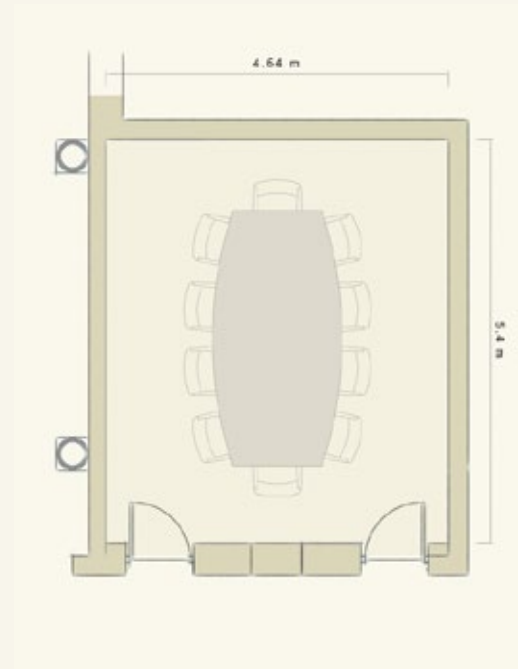
Setup cost: R5000

INCLUDES:

- One long 10-seater table (min 6 guests, max 10 guests)
- Leather chairs
- Standard white napkins
- Cutlery, crockery & glassware
- Printed menus
- Waiter service

EXCLUDES:

- Menu and beverage costs
- Flowers and décor
- Service fee



Capacity

FLOOR AREA	WIDTH	LENGTH
20.05m ²	4.64m	5.4m

DOOR HEIGHT	CEILING HEIGHT
1.9m	3m
CONFIGURATION	PAX
Boardroom	10



Tasting Room

Private Dining & Functions

(min 15 guests, max 40 guests)

VENUE HIRE:

R20 000 (Friday to Sunday)

R15 000 (Monday - Thursday)

INCLUDES:

- Tables & chairs
- White Linen napkins
- Cutlery, crockery & glassware
- Physical cash bar setup, condiments, ice, glasses & barmen
- Waiter service

EXCLUDES:

- Menu and beverage costs
- Flowers & décor
- Service charge



Private Dining

Private Dining & Functions

(min 15 guests, max 40 guests)

VENUE HIRE:

R5000

INCLUDES:

- Tables & chairs
- White Linen napkins & table cloths
- Cutlery, crockery & glassware
- Physical cash bar setup, condiments, ice, glasses & barmen
- Waiter Service

EXCLUDES:

- Menu and beverage costs
- Flowers & décor
- Service charge



Our Day Conference Packages include:

Full day packages - R745 per person per day Conference

Room hire and setup per person consisting of:

- Notepad and pen
- Still and sparkling water
- 1 Flipchart and markers
- Data Projector and screen/ LCD screen
- WIFI
- Tea/coffee and snack station available throughout the duration of the conference
- Two course lunch at the Manor Kitchen (for up to 40 guests)
- Finger lunch & Buffet lunch available for group larger than 40

Half day packages - R695 per person per day

Half Day morning 08h00 – 13h00 or Half Day afternoon 12h00 – 17h00, including lunch

Conference room hire and setup per person consisting of:

- Notepad and pen
- Still and sparkling water
- 1 Flipchart and markers
- Data Projector and screen/ LCD screen
- WIFI
- Tea/coffee and snack station available throughout the duration of the conference
- Two course lunch at the Manor Kitchen (for up to 40 guests)
- Finger lunch & Buffet lunch available for group larger than 40

Additional items not included but available:

PRICE ON REQUEST

- Halaal/Kosher meals are charged
- PA System with one microphone
- Additional microphone
- Additional flip chart
- Data projector
- Conference phone
- Specialized technician



Lanzerac Wine Estate

Stellenbosch, Cape Winelands

South Africa

No. 1 Lanzerac Road, Stellenbosch, 7600



+27 (0)21 887 1132

events@lanzerac.co.za

www.lanzerac.co.za

